



From concept to completion, we deliver integrated **design, supply, and implementation** solutions that bring your vision to life, all around the world.







## Cofiwu Inc.

"Build Excellence Together"

Cofiwu provides end to end solutions in superstructure construction, drawing on the commercial legacy of its founding partners since 1954. Guided by a partnership ethos, we support business partners from concept and procurement through logistics and on site execution, consistently delivering measurable value.

### Integrated Solutions, Maximum Efficiency

**Systems:** We handle products as comprehensive "product systems" rather than individual items, ensuring that the correct quantities arrive precisely when needed, preventing unnecessary delays and resource losses.

**Spaces:** We provide a single-source solution for bathrooms, kitchens, saunas, and similar areas, including ready-to-use visuals, technical datasheets, and integrated architectural and engineering solutions, enabling project teams to make quick, conflict-free decisions.

### Global Business Network & Strategic Logistics

Direct collaboration with thousands of manufacturers in Türkiye, the Netherlands, Europe, the Americas, and China ensures every quality, specification, and budget target is met. Logistics hubs in İstanbul and Rotterdam secure punctual, cost-efficient deliveries, generating substantial time-cost advantages.

### Pinnacle of Added Value

Involvement during planning and design eliminates hidden costs through precise preparation, ensuring uninterrupted implementation and durable performance on site.

### Trust, Quality, Sustainability

Our completed projects showcase the reputation earned by a professional team, transparent processes, and a solutions-oriented approach. We remain committed to elevating industry standards on these principles.

We are honored to be recognized as a "**Reliable Solution Partner**" by the sector.











Design & Concept



Material & Supply



Storage & Logistics





Implementation & Delivery

## Our Expertise

Concept Index

### Systems

Ceiling Systems  
Window Systems  
Facade Cladding Systems  
Door Systems  
Floor Systems  
Railing Systems  
Waterproofing Systems  
Wall Systems  
Lighting Systems

### Areas

Bathrooms  
Kitchens  
Hotel Rooms  
Living Rooms  
Office Rooms

### Services

Architecture & Design  
Computational Design and VR  
Supply Chain Management  
Implementations





## Webpage

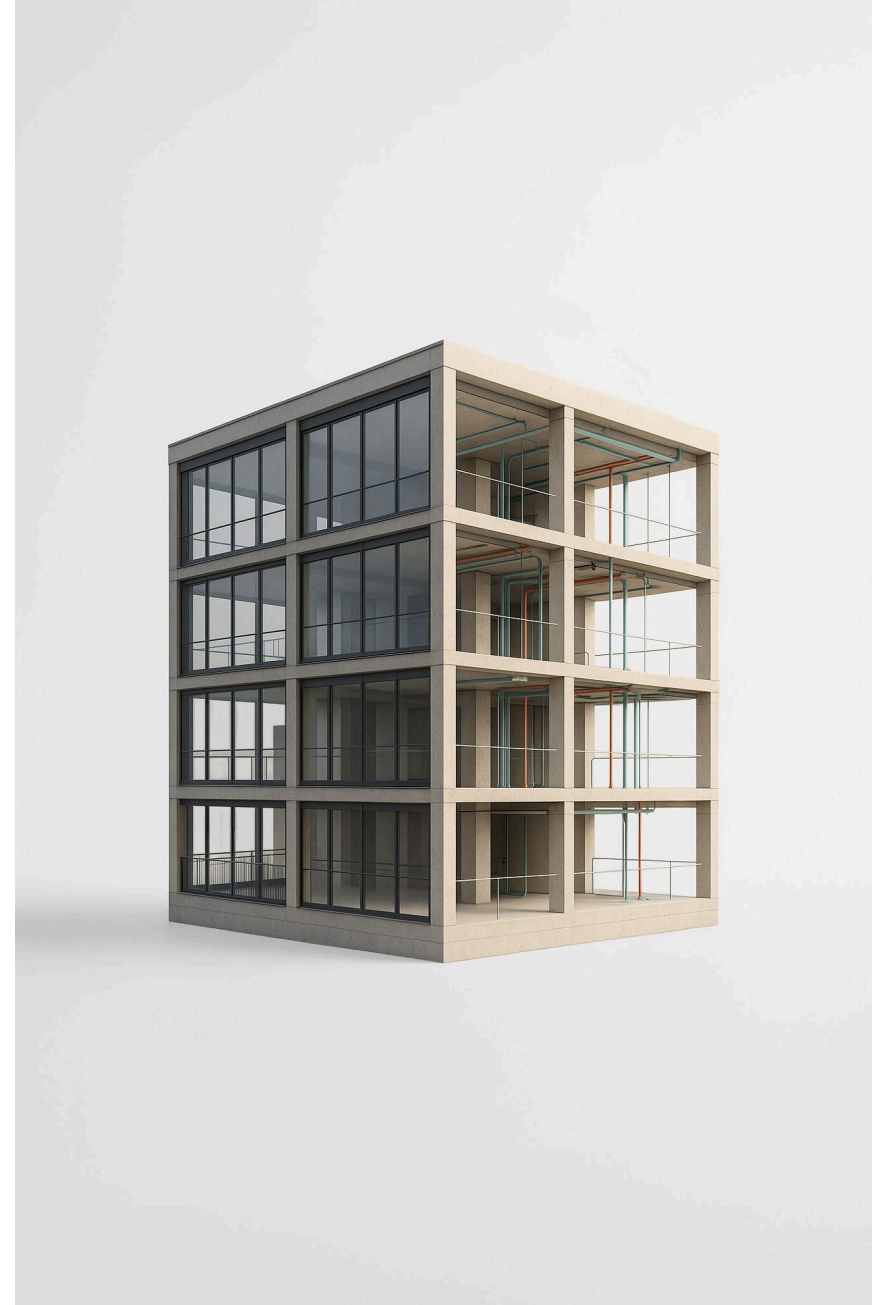
Scan to explore more on our website

# Systems

Cofiw develops integrated finishing systems to provide dependable, accurately fitting, and easy to install solutions for construction projects. Projects require components that work consistently, maintain precise dimensions, and perform reliably under different site conditions. Our systems address these needs by replacing variable, site-built methods with controlled, factory-produced elements.

Through standardized details and clear installation procedures, our approach reduces on-site errors and lowers the need for specialized labor. This ensures stable performance, uniform quality, and safer installation across all project stages. The result is a more predictable construction process with systems that maintain their reliability throughout the life of the structure.

You may share your basic requirements and we will recommend the most suitable system, or you can provide full project details for a comprehensive technical evaluation to identify the optimal solution.



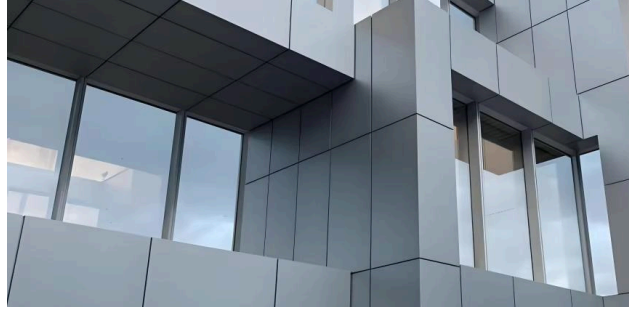




Ceiling Systems



Window Systems



Facade Cladding Systems



Door Systems



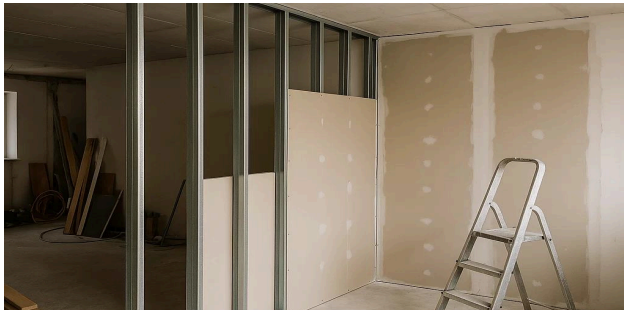
Floor Systems



Railing Systems



Waterproofing Systems



Wall Systems



Lighting Systems





# Ceiling Systems

Our ceiling systems are designed to provide both visual harmony and optimal technical performance for your spaces. With every detail carefully considered, these systems offer a modern touch in architectural design, delivering both aesthetic appeal and lasting solutions.





### Seamless Ceiling System

A joint free ceiling system designed to achieve a continuous, uniform surface with minimal visual interruption. It supports precise leveling, stable panel connections, and clean finishing suitable for architectural spaces requiring smooth ceiling geometry.



### Perimeter Cove Ceiling System

A continuous recessed ceiling detail installed along the perimeter to create indirect lighting and controlled edge illumination. The system supports accurate corner transitions, stable mounting, and clean shadow line formation for refined ceiling finishes.



### Central Cove Ceiling System

A recessed linear ceiling solution designed to house indirect lighting and create controlled light distribution. The system ensures precise alignment, clean shadow lines, and compatibility with electrical and mechanical ceiling integrations.



### Lay-On T Ceiling System

A modular ceiling system designed to rest on exposed T grid profiles, allowing easy access to mechanical and electrical services above. It provides stable panel seating, consistent alignment, and efficient installation for commercial and technical interiors.



### Clip-In Ceiling System

A concealed frame metal ceiling system where panels lock into the carrier with a secure clip mechanism. It provides a smooth, continuous appearance, precise alignment, and controlled access through demountable panels when needed.



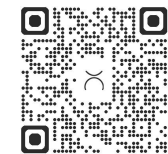
### Lay-In T System

A suspended ceiling system where panels sit into exposed T grid profiles, enabling quick installation and easy access to overhead mechanical and electrical services. It is ideal for functional spaces requiring modular coordination and consistent grid geometry.



### Glass Ceiling System

A transparent overhead system designed to provide natural daylight, structural clarity, and weather resistant performance. Its laminated or tempered glass composition supports safe installation while maintaining clean architectural lines in both interior and exterior applications.



For more details  
check out our website





## Window Systems

Our window systems are developed to strengthen the architectural and functional performance of each project we support. We design and coordinate every configuration from profiles to hardware, to ensure stable operation, clean detailing, and reliable integration with the surrounding facade. Through precise engineering and disciplined installation workflows, we maintain full control over performance, durability, and visual consistency across all window packages.





### Fixed Window System

Designed for spaces where airflow is not required, this system delivers maximum light transmission, strong thermal performance, and uninterrupted exterior views. It provides superior insulation, clean architectural lines, and long-term durability suitable for modern residential and commercial environments.



### Sliding Window System

Engineered for wide openings and flexible use, this system allows smooth horizontal movement while maintaining airtight performance and clear sightlines. Ideal for balconies, terraces, and contemporary residential or commercial facades.



### Tilt & Turn Window System

Designed for dual function ventilation and secure operation, this system offers inward tilting for controlled airflow and full opening for easy access and maintenance. It is suitable for residential and commercial spaces that require both flexibility and performance.



### Casement Window System

Built for effective ventilation and wide angle opening, this system operates on side hinged movement to deliver clear airflow and easy usability. It is a reliable choice for both residential and commercial applications requiring precise operation and weather resistance.



### Folding Window System

Designed for wide openings that require full clearance, this system operates on a synchronized folding mechanism that stacks panels to one side for maximum openness. It supports smooth movement, stable sealing points, and strong structural performance, ideal for terraces, cafes, and residential areas where both openness and protection are needed.



### Awning Window System

Integrated into curtain wall facades, these modules provide controlled daylight, reliable weather performance, and precise alignment with the mullion-transom structure. These modules support stable operation and maintain the continuity of the facade geometry.



### Pivot Window System

Pivot windows operate through a central vertical or horizontal axis, allowing the sash to rotate smoothly for controlled ventilation and unique architectural expression. Suitable for modern facades prioritizing clean lines, flexible airflow, and easy interior access for maintenance.



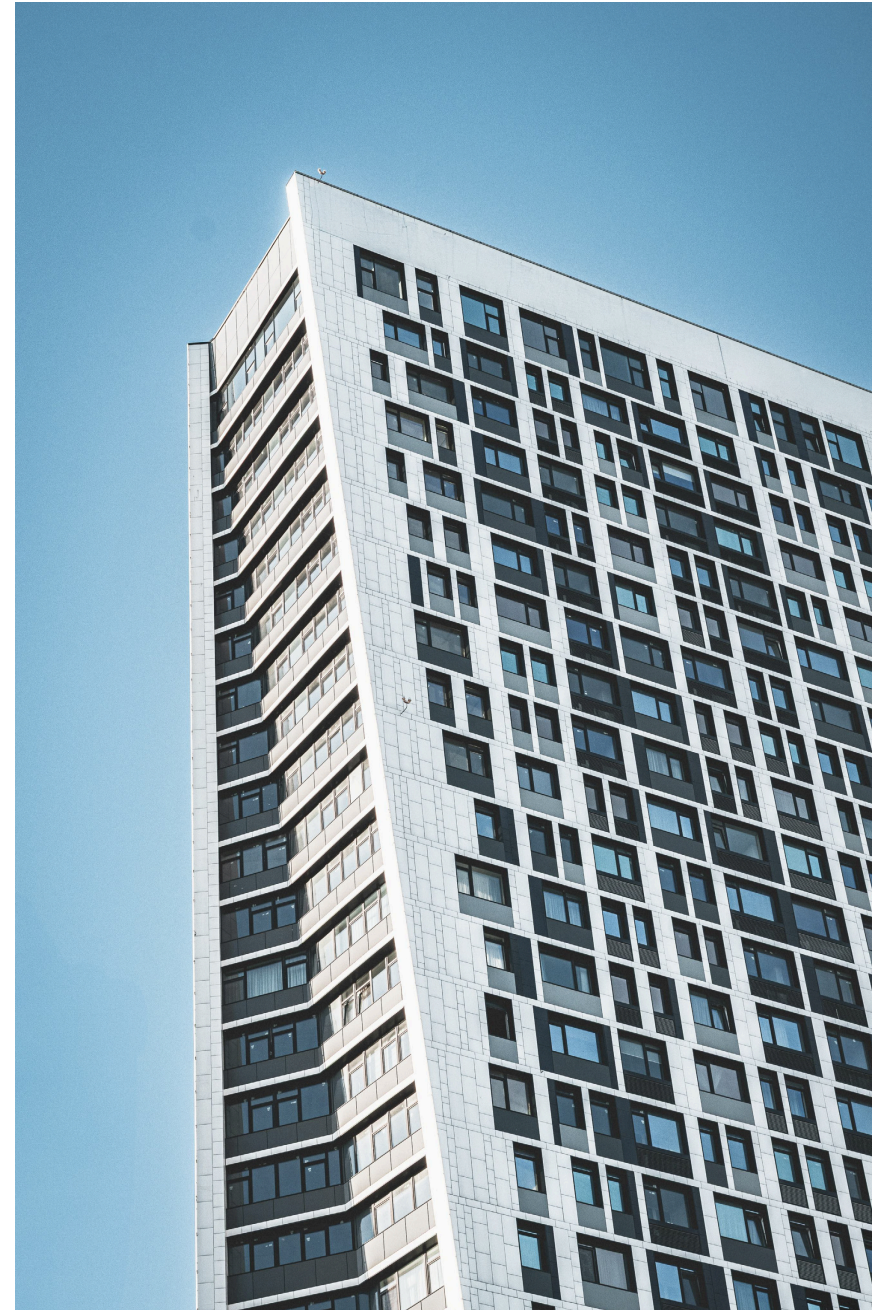
For more details  
check out our website





## Facade Cladding Systems

A complete exterior envelope solution engineered to provide structural stability, weather resistance, and precise architectural expression. The system supports consistent panel alignment, controlled joint detailing, and reliable integration with insulation, sub framing, and glazing components for long term facade performance.







### Aluminum Composite Panel

A lightweight cladding material composed of two aluminum sheets bonded to a mineral filled core. Provides high surface durability, formability, and consistent facade appearance for modern exterior applications.



### Natural Stone

A solid facade material offering structural strength, natural texture, and long-term weather resistance. Suitable for premium architectural surfaces requiring authenticity and high durability.



### Porcelain

A dense, low porosity cladding product fired at high temperatures, providing strong resistance against stains, moisture, and outdoor conditions. Ensures a clean, uniform facade finish with minimal maintenance.



### Flexible Stone Veneer

A thin and lightweight stone surface produced with mineral composites, offering flexibility, easy installation, and natural stone texture. Suitable for both interior and exterior applications where reduced weight and adaptable detailing are required.



### Fiber Cement

A composite facade board made from cement, cellulose fibers, and mineral fillers. Provides dimensional stability, fire resistance, and a textured architectural surface suitable for ventilated facade systems.



### High Pressure Laminate - HPL

A high pressure laminate panel formed by compressed kraft papers and resins. Delivers impact resistance, color stability, and a durable exterior surface for ventilated facade designs.



### Exterior Moulding

A lightweight exterior cladding providing thermal insulation, clean grooved detailing, and durable performance against outdoor conditions while enhancing the overall facade appearance.



For more details  
check out our website



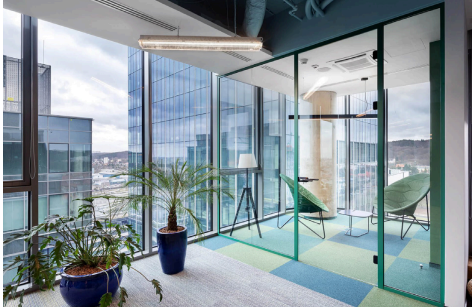


# Door Systems

Our door systems combine durability, security, and modern aesthetics to enhance both functionality and design in any space. Engineered for operation and long-term performance, these systems offer a variety of styles, materials, and configurations to suit different architectural needs. Whether for residential, commercial, or industrial applications, our doors provide a perfect balance of strength.







### Glass Door System

Designed for transparency and spatial continuity, this system offers stable framing, clean edges, and reliable hardware performance for both interior and exterior applications.



### Sliding Door System

Built for space efficiency and smooth lateral movement, this system provides stable track operation, controlled sealing, and clear opening transitions for modern interiors.



### Pivot Door System

Engineered with a central or offset pivot mechanism, this system supports wide, balanced openings with minimal visual interruption and strong structural performance.



### Folding Door System

Created for large openings requiring full clearance, this system uses synchronized folding panels to maximize openness while maintaining sealing and stability.



### Photocell Door System

An automated entry solution with motion sensor activation, providing controlled access, consistent opening cycles, and reliable integration with commercial traffic flows.



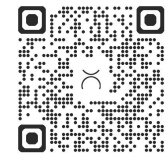
### Fire Rated Door System

Certified to resist fire and smoke spread, this system maintains integrity under high temperature conditions while supporting safe evacuation and regulatory compliance.



### Steel Door System

Manufactured for high security and heavy duty use, this system offers enhanced strength, impact resistance, and long-term operational stability in demanding environments.



For more details  
check out our website



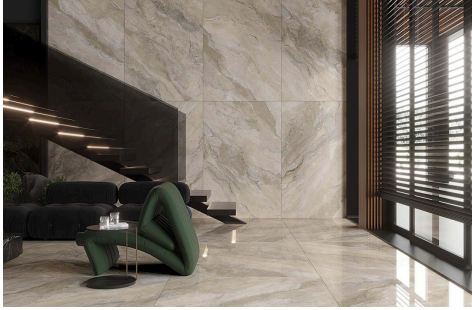


# Floor Systems

Our floor systems are developed to provide structural stability, surface durability, and precise coordination with mechanical and architectural interfaces. Each solution supports clean detailing, long-term performance, and efficient installation adapted to the needs of modern projects.







### Ceramic & Porcelain Flooring

A hard surface flooring option delivering high durability, water resistance, and precise edge alignment for both wet and dry interior spaces.



### Vinyl Flooring

A resilient surface finish offering strong wear resistance, hygienic performance, and consistent dimensional stability for high traffic environments.



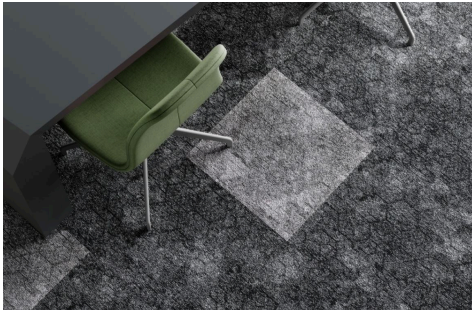
### Rubber Flooring

An impact absorbing, slip resistant surface option offering comfort underfoot and stable performance in gyms, schools, and high activity areas.



### Natural Stone Flooring

A premium flooring material offering structural mass, long-term durability, and distinct natural texture with precision installation requirements.



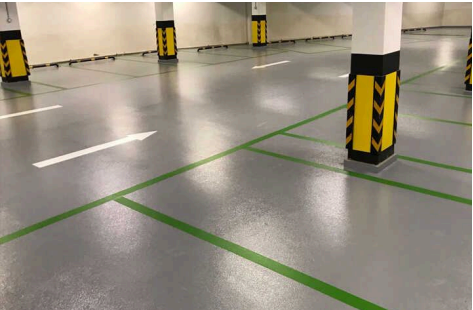
### Carpet Flooring

A modular textile flooring solution supporting acoustic comfort, easy replacement, and layout flexibility for office and hospitality spaces.



### Raised Access Floor

A modular flooring solution with adjustable pedestals, allowing underfloor cabling, HVAC routing, and fast service access while maintaining stable load performance.



### Epoxy Flooring

A seamless, high strength coating designed for industrial and commercial use, providing chemical resistance, impact tolerance, and easy cleaning.



For more details  
check out our website





# Railing Systems

Our railing systems are engineered to provide reliable safety, structural stability, and clean architectural detailing across all circulation and perimeter areas. Each configuration supports controlled load performance, precise mounting, and material durability, ensuring consistent visual alignment and long-term functionality in both interior and exterior applications.





### Glass Railing Systems

Frameless or profile supported configurations offering clear visibility, strong impact resistance, and precise edge detailing for balconies, terraces, and interior circulation areas.



### Metal Railing Systems

Designed to provide structural safety and clean architectural detailing, these systems deliver stable load performance, corrosion resistant materials, and precise mounting details. They ensure consistent alignment and long-term reliability across balconies, terraces, staircases, and other circulation areas.



### Balcony Railing Systems

Engineered for safe perimeter protection with stable mounting details, weatherresistant components, and consistent alignment across facade lines.



### Stair Railing Systems

Designed to ensure safe vertical circulation through rigid structural support, reliable hand grip ergonomics, and secure anchoring on stair flights and landings.



### Hand Rail Systems

A continuous support rail providing secure guidance along walkways and staircases, with durable mounting brackets and clean, uninterrupted geometry.



### Terrace Railing Systems

A perimeter safety solution built for open outdoor spaces, combining stable wind load performance, corrosion resistant materials, and controlled visibility.



### Window Security Grille Systems

Designed to enhance both security and architectural character, this wrought iron window grille provides stable protection with decorative detailing.



For more details  
check out our website





## Waterproofing Systems

Our waterproofing systems are developed to protect structural elements against moisture, water penetration, and long-term environmental exposure. Each solution provides controlled sealing performance, reliable substrate adhesion, and compatibility with roof, wall, and foundation assemblies ensuring durable protection and consistent behavior across all project conditions.





### Bituminous Membrane

Bituminous membranes provide long lasting waterproofing protection for foundations, roofs, and terraces. With flexible SBS or APP modified bitumen layers, they ensure high resistance to temperature changes and water pressure.



### Liquid Applied

Liquid applied systems form a seamless, joint free protective coating. Suitable for complex surfaces, balconies, and bathrooms, they offer elastic, durable, and UV resistant waterproofing with easy on site application.



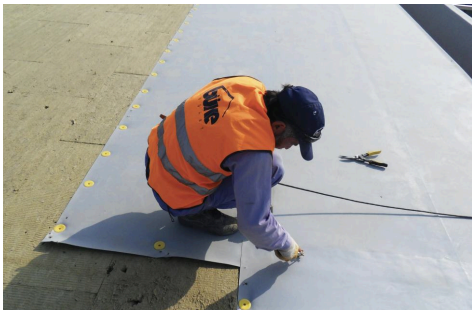
### Polyurethane Waterproofing

Polyurethane membranes deliver high elasticity and chemical resistance. Used on exposed roofs and podium decks, they create a continuous, durable layer that adapts to structural movement and prevents leaks.



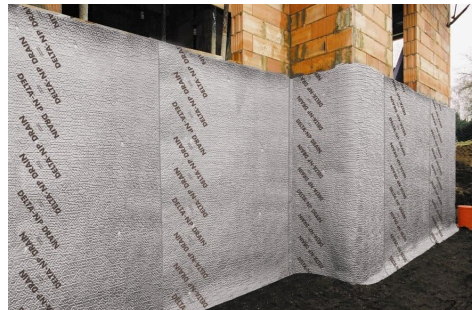
### Cementitious Waterproofing

Cementitious coatings are ideal for internal wet areas, water tanks, and retaining walls. They bond strongly to concrete surfaces and create a rigid or flexible barrier against moisture infiltration.



### PVC / TPO Membrane

A flexible waterproofing layer used on roofs and wet areas, providing strong UV resistance, weldable seams, and long-term protection against water penetration. Its lightweight structure supports fast installation and reliable performance across large surface applications.



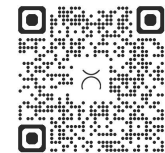
### Drainage & Protection Boards

Drainage and protection systems complement waterproof layers by preventing mechanical damage and controlling hydrostatic pressure. They ensure long-term membrane integrity and effective water management.



### Epoxy Waterproofing

It grants chemical resistance, strong adhesion, and a rigid film structure that prevents moisture penetration in areas exposed to constant wear. Suitable for wet rooms, technical spaces, industrial floors, and environments requiring durable, easy-to-clean waterproof protection



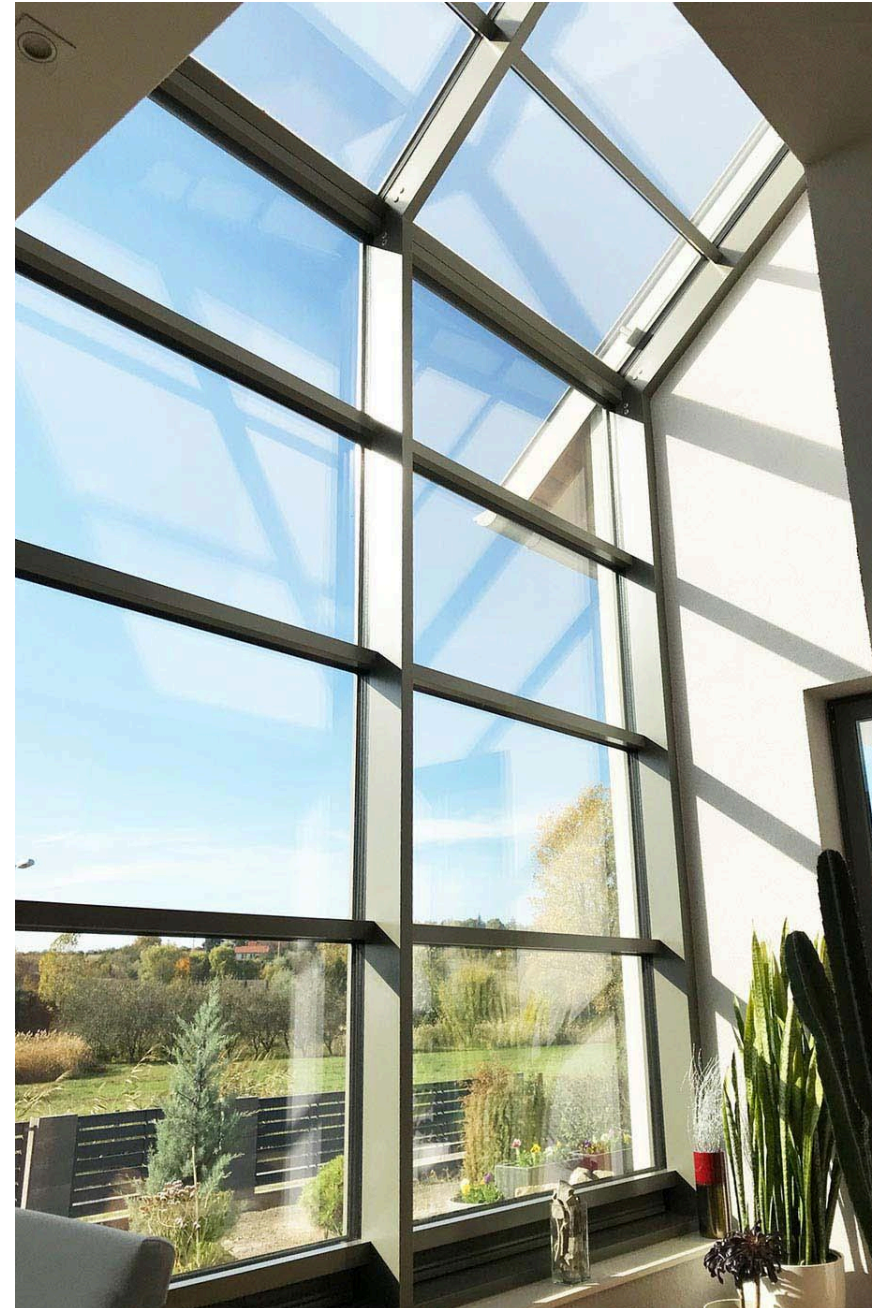
For more details  
check out our website





## Wall Systems

Our wall systems are developed to support structural stability, acoustic control, and clean architectural finishing across both interior and exterior applications. Each solution is engineered for reliable installation, material durability, and seamless coordination with adjacent floor, ceiling, and facade assemblies, ensuring consistent performance throughout the project.





### Drywall Systems

A lightweight partition system providing clean surface finishing, reliable acoustic control, and fast installation. Suitable for interior layouts requiring flexible planning and precise joint detailing.



### Sandwich Panel Systems

A multilayer insulated wall panel offering strong thermal performance, structural rigidity, and rapid assembly. Commonly used for industrial buildings, warehouses, and exterior wall enclosures.



### Cement Board Systems

A cement based, high density board system providing moisture resistance, impact durability, and stable exterior performance. Suitable for facade cladding, ventilated wall assemblies, and robust interior applications.



### Office Partition Systems

A modular wall solution designed for adaptable workspace layouts, offering demountable panel structures, clean profiles, and integrated acoustic and glass options.



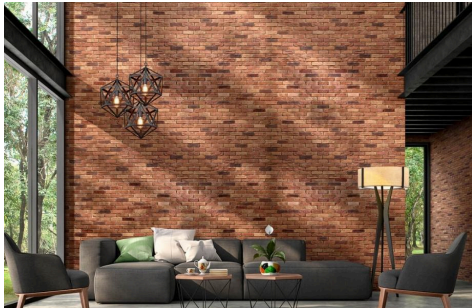
### Curtain Glass Wall Systems

A non-load-bearing facade wall assembly engineered to deliver controlled daylight, weather resistance, and continuous exterior appearance through aluminum framing and glazing modules.



### Decorative Wall Systems

A surface finishing wall solution designed to enhance interior character through textured, patterned, or panel based cladding, supporting precise alignment and long-term visual consistency.



### Brick Wall Systems

Used as a durable and load bearing wall solution, this system provides strong structural performance, thermal stability, and consistent joint alignment. Its modular form allows clean detailing and reliable integration with interior and exterior wall assemblies.



For more details  
check out our website





# Lighting Systems

Our lighting systems are designed to support visibility, spatial comfort, and architectural expression across both interior and exterior environments. Each solution provides reliable illumination performance, durable fixture construction, and precise integration with surrounding building elements, ensuring consistent light quality and long-term efficiency in every application.





### Ceiling Lighting System

An architectural lighting solution delivering uniform distribution, recessed or surface mounted integration, and compatibility with various ceiling geometries and interior layouts.



### Garden Lighting System

Designed for outdoor landscape areas, this system provides controlled illumination, weather resistant housing, and stable ground or surface mounting for long-term exterior performance.



### Decorative Lighting System

A visual enhancement system focused on form and atmosphere, offering fixture based accent lighting with controlled brightness, material variation, and interior design coherence.



### Stair Lighting System

A functional lighting solution positioned along steps or handrails to enhance visibility and safety, incorporating glare control and durable architectural detailing.



### Facade Lighting System

An exterior lighting solution for highlighting building elevations, providing controlled beam angles, stable mounting brackets, and long-term resistance against weather exposure.



### Parking Lighting System

A high output lighting solution ensuring safe visibility in open or enclosed parking areas, with efficient optics, durable housings, and uniform ground illumination.



### Street Lighting System

An urban scale lighting system offering wide area coverage, optimized pole mounted optics, and energy efficient operation for roads, walkways, and public zones.



For more details  
check out our website





## Webpage

Scan to explore more on our website

## Areas

We provide end to end interior solutions that cover every stage of design, material selection, and implementation. Any concept you choose can be fully adapted to your project, supported by our complete supply capability and coordinated execution. Through controlled workflows and precise detailing, we ensure that each space is delivered with consistent quality and clear architectural expression.

In each area we deliver, integrate furniture, lighting, ceiling, and flooring systems into a complete and cohesive interior solution. Every space can be fully developed without requiring interpretation on your side, you simply select the concept, and we handle the full design, coordination, and supply process from start to finish.







Bathrooms



Kitchens



Hotel Rooms



Living Rooms



Office Rooms



For more details  
check out our website





# Bathrooms

Each bathroom concept is developed to bring functionality and character together in residential environments. Every detail from layout to surface coordination, reflects spatial balance and efficient use of area. Materials are selected for durability, comfort, and visual clarity, while fittings and accessories are sourced through a controlled supply process that ensures both quality and compatibility. These spaces are designed not only to serve everyday needs, but to establish a consistent sense of refinement across the entire living environment.





Olivestan



Dynamic



Triton



Bloom



Oak



Serene



Organized



For more details  
check out our website





# Kitchens

Each kitchen is shaped around daily rhythm and precision. Layouts are planned to balance practicality with aesthetic clarity, ensuring smooth workflow and visual consistency. Finishes and materials are selected for durability and tactile quality, while hardware and fittings support long-term performance. Beyond its function, every kitchen concept defines a distinct atmosphere, built to complement the character of the home and the habits of those who live in it.





Terra



Livia



Auron



Elvo



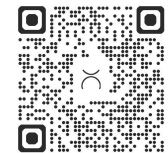
Solia



Arlet



Rustea



For more details  
check out our website





# Hotel Rooms

Each hotel room concept is designed to express comfort through balance and proportion. Spatial arrangements emphasize calmness and clarity, integrating storage, lighting, and material textures into a coherent whole. Every detail, from the tone of surfaces to the placement of furnishings, is refined to support rest and visual harmony. These rooms are composed as private environments that reflect both individuality and timeless simplicity.





Avelia



Arvo



Varell



Liora



Rinna



Berna



Alin



For more details  
check out our website





# Living Rooms

Living spaces are defined by openness, comfort, and continuity. Each design blends proportion, circulation, and material contrast to create a natural flow within the home. Surfaces, lighting, and furnishings are coordinated to support versatile use from quiet moments to social gatherings. Every composition aims to balance visual warmth with structural clarity, shaping an atmosphere that feels both welcoming and enduring.





Kavero



Melaris



Orvena



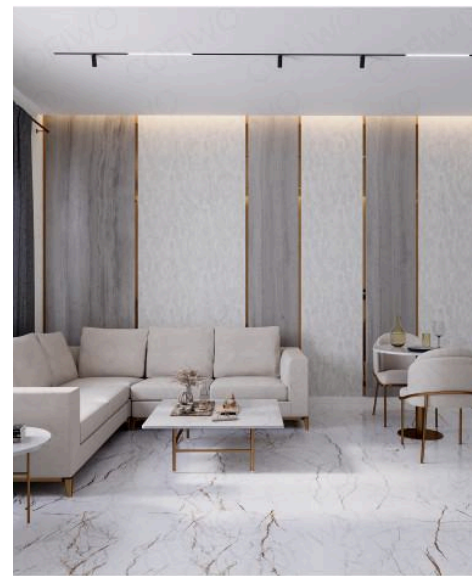
Nelvoa



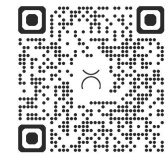
Levara



Ornn



Havva



For more details  
check out our website





# Office Rooms

Our office room solutions are designed to support focused work, collaboration, executive meetings, and social interaction within a cohesive interior environment. Each space is developed with integrated furniture, lighting, ceiling, and flooring systems to ensure functional comfort, clear circulation, and a consistent architectural character across the entire workspace.





Elvara Workline



Avenzo Meeting



Mirello Collaboration



Luretta Lounge



Deriva Focus



Sena Executive



Orino Meeting



For more details  
check out our website



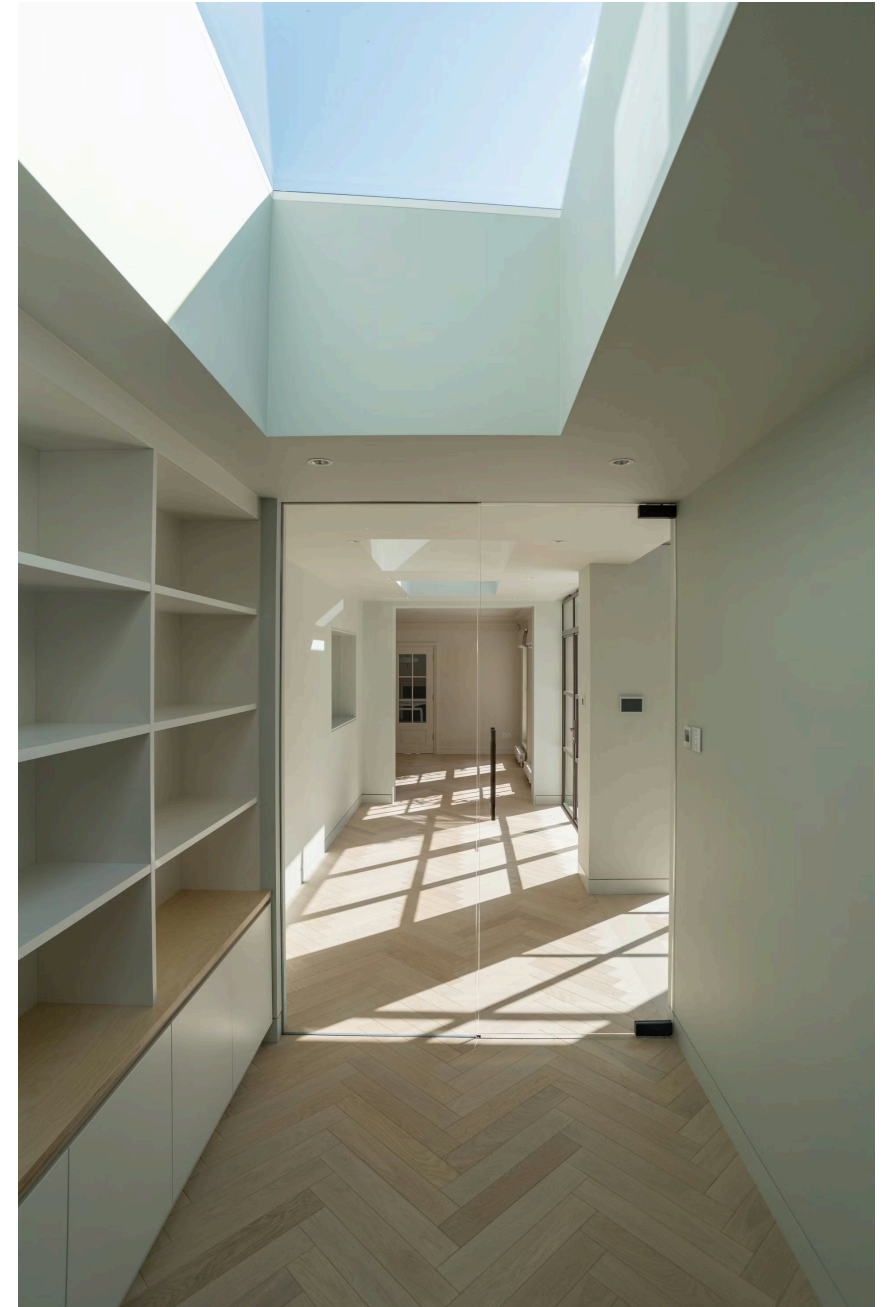


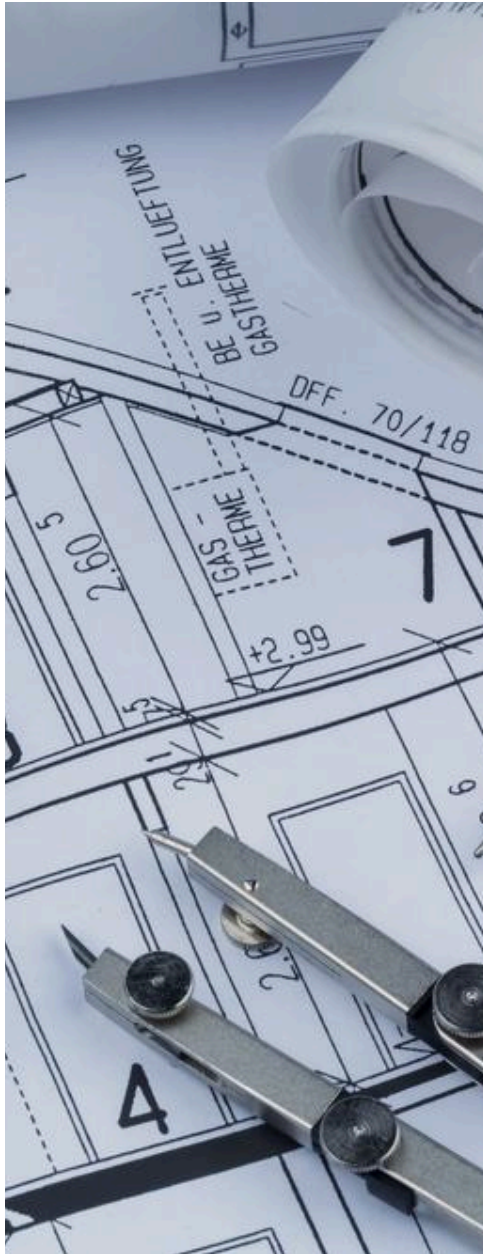
### Webpage

Scan to explore more on our website

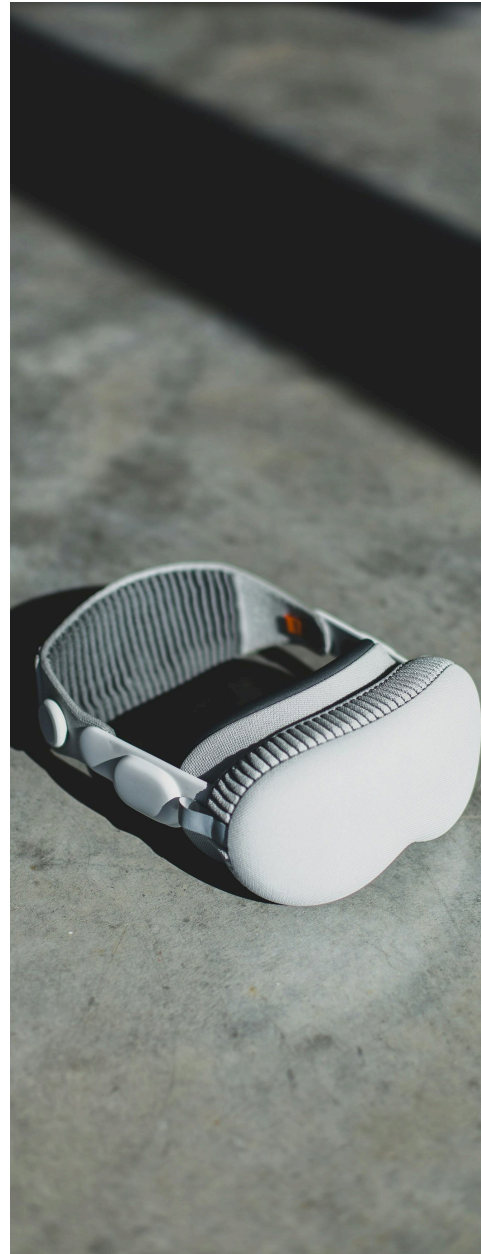
## Services

We provide comprehensive solutions that optimize processes, enhance coordination, and ensure efficiency across all project phases. From planning to execution, our approach integrates strategic methodologies to improve operations, resource management, and design implementation. By combining expertise with innovation, we develop adaptable solutions that align with evolving industry needs, delivering lasting value and functional excellence.





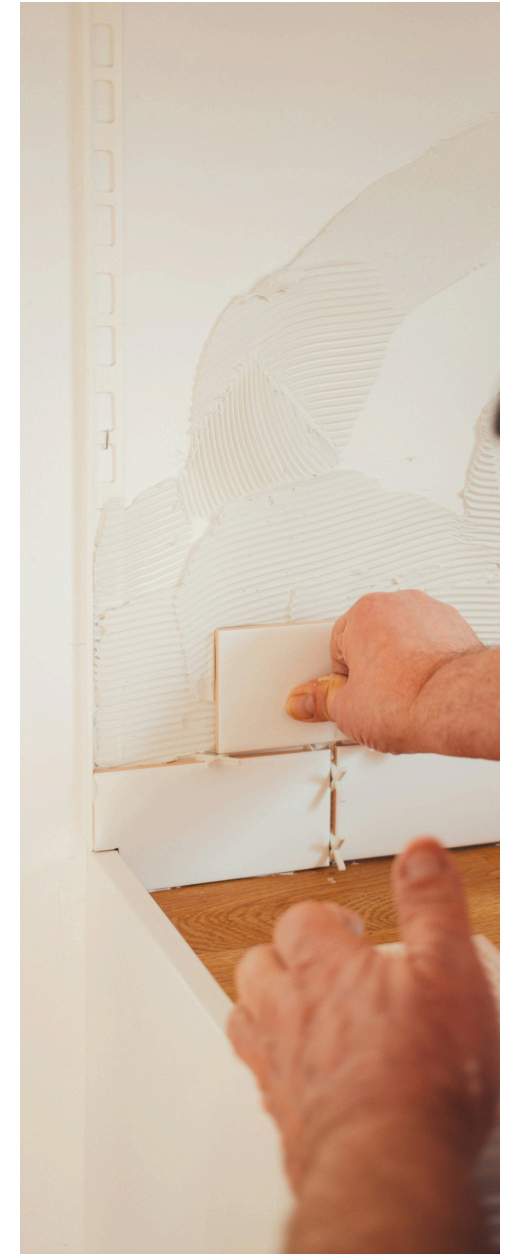
Architecture & Design



Computational Design and VR



Supply Chain Management



Implementations





## Webpage

Scan to explore more on our website

# Architecture & Design

From concept to completion, we collaborate closely with our clients to bring their visions to life. Whether designing residential, commercial, or mixed use spaces, we focus on seamless integration with the surrounding environment, innovative use of materials, and adaptability to future needs.

## 3D Modeling

Using advanced 3D modeling, BIM technology, and VR tools, we create lifelike visualizations that allow you to experience the space in a virtual setting. This provides clarity and helps clients make informed decisions about design elements before construction begins.

## Visual Design

Visual design supports our architectural work through high quality presentations, renderings, and graphics that communicate both concept and detail with accuracy and refined style.

## Budget Planning

Our detailed documentation provides precise instructions for builders, from materials to installation methods, ensuring the project stays true to the design intent, timeline, and budget.

## Facade Design

Our facade design services combine technical precision with aesthetic intent. Systems are selected and detailed to achieve energy efficiency, durability, and architectural identity, ensuring consistency between performance and appearance.





### Webpage

Scan to explore more on our website

## Computational Design and VR

Our Computational Design & VR services bring architecture and design concepts to life through photorealistic visualization, immersive virtual experiences, and state-of-the-art 3D modeling. By merging computational design techniques with cutting edge technology, we provide clients with interactive previews, refined design solutions, and precise building data.

Whether for architectural renderings, VR walkthroughs, or BIM models, our services deliver unparalleled clarity and insight into each project's design and functionality.

### VR Exploration

Our VR experiences allow clients to walk through their projects in an immersive environment. From residential interiors to large commercial developments, our VR solutions improve understanding and client satisfaction by enabling realtime exploration and interaction.

### BIM Services

With BIM modeling, we deliver datarich models that support collaborative workflows, clash detection, and detailed design coordination. Our BIM services improve project accuracy and streamline the path from design to construction.

### Photorealistic Visuals

We produce high resolution, photorealistic renderings that illustrate every texture, material, and light effect. These visuals provide an accurate preview of the final design, helping clients visualize their space with exceptional detail and realism.







### Webpage

Scan to explore more on our website

## Supply Chain Management

Supply Chain Management (SCM) is recognized as the backbone of effective business operations, covering every step from procuring raw materials to delivering final products. Its core aims reducing costs, boosting efficiency, and ensuring customer satisfaction require meticulous coordination across all phases. Cofiwo takes this further by offering tailored solutions for both products and services. Through low risk, technology driven, and sustainable approaches, the company optimizes processes to stay agile in changing markets. By leveraging advanced tools and data driven insights

### Procurement

We manage the sourcing of materials and products through verified suppliers, ensuring quality, traceability, and cost efficiency at every stage of the acquisition process.

### Warehouse & Storage

Our storage solutions are organized for safety and accessibility, maintaining controlled conditions and optimized inventory flow for all project requirements.

### Logistics

From packaging to international delivery, our logistics operations ensure timely and secure transportation, integrating tracking systems for full visibility and reliability.

### Customs

We views customs as the linchpin of global trade, employing streamlined processes to ensure swift and reliable cross-border shipments. By meticulously handling documentation, submissions, and fee calculations, the company helps clients steer clear of costly delays, penalties, and compliance risks. Through advanced technology and expert oversight, Cofiwo enables businesses to focus on growth while it manages behind-the-scenes complexities. The result is an efficient, hassle free customs experience that paves the way for sustained international success.





### Webpage

Scan to explore more on our website

## Implementation

Implementation represents the stage where design becomes physical reality. Each process from facade systems to interior assemblies is managed with technical precision and controlled sequencing. Materials, detailing, and coordination converge to ensure performance, longevity, and visual consistency across all completed works.

### Facade Cladding Systems

We carry out facade works with precise coordination between structure and surface. Each system ensures durability, accurate alignment, and a consistent architectural expression across all elevations.

### Wall Systems

Wall constructions unite strength, insulation, and finish quality. They are assembled to maintain surface precision and continuity, creating balanced and durable interiors.

### Aluminum and Glass Systems

Our aluminum and glass solutions combine structural integrity with visual clarity. Designed for performance and comfort, they provide insulation, transparency, and refined detail in every application.

### Bathroom Areas

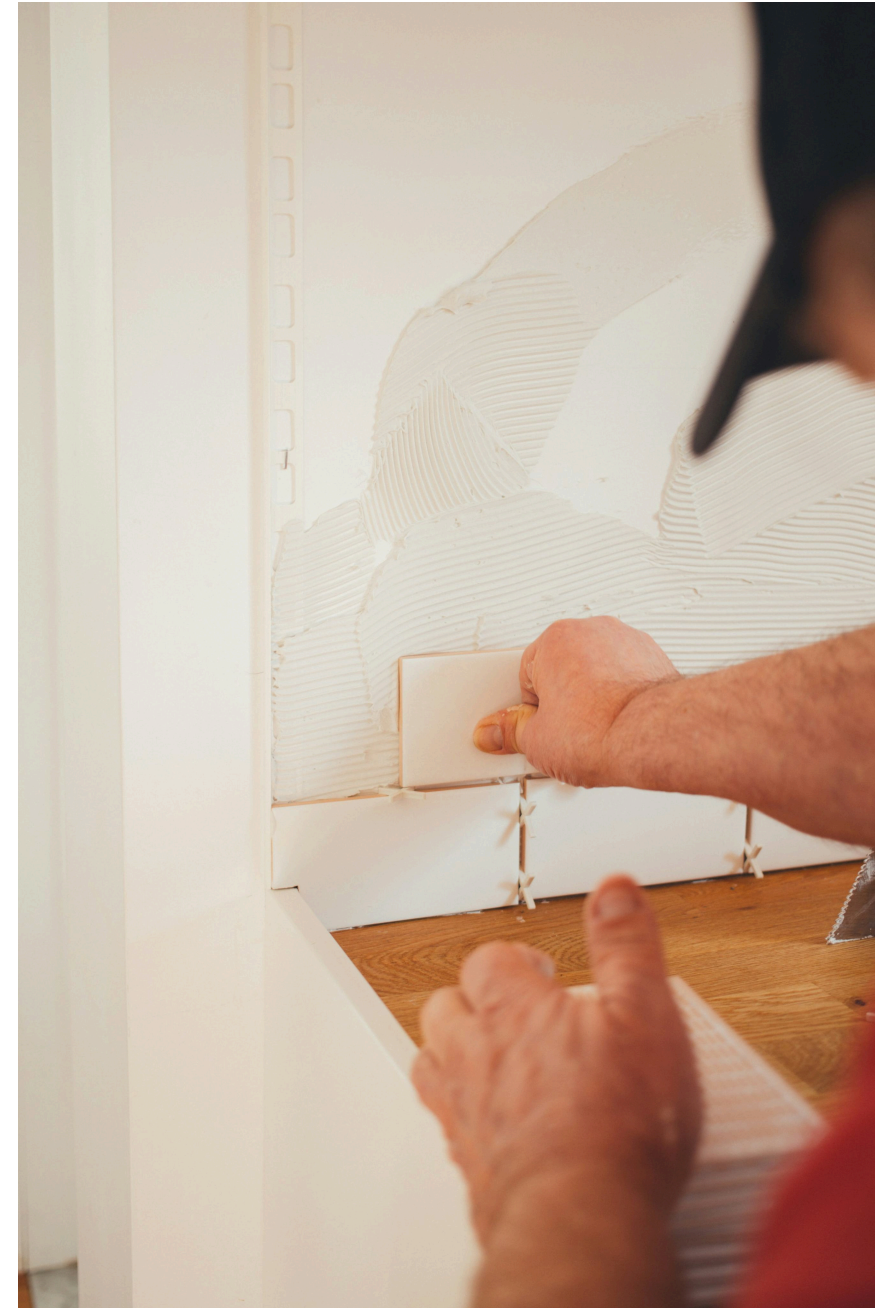
Bathroom installations blend technical accuracy with aesthetic discipline. Plumbing, fittings, and finishes are coordinated to ensure hygiene, resilience, and comfort in daily use.

### Ceiling Systems

Ceiling installations are executed with a focus on proportion, acoustic control, and clean visual lines. Each system supports lighting integration and enhances the spatial rhythm of the interior.

### Kitchen Areas

Kitchen works integrate modular elements, functional detailing, and material quality. Each space is developed through controlled production and installation, achieving both efficiency and visual coherence.







# Works

Our projects represent the wide range of work we design, supply, and implement across different sectors, scales, and regions worldwide. Each project reflects our integrated approach combining precise planning, material control, and disciplined execution to achieve clear architectural results. From interior solutions to complete system packages, we deliver spaces and structures that demonstrate the quality, consistency, and technical expertise behind every project.

## Who We Work With

### Developers & Investors

We support clear budgets, predictable timelines, and system-based solutions from concept onward.

### Contractors & Construction Managers

We provide buildable systems, coordinated deliveries, and technical support under real site conditions.

### Architects & Designers

We offer system compatible materials, BIM coordination, and visuals that help secure client approval.

### Retailers & Local Partners

We build long-term supply partnerships with consistent quality, documentation, and after sales support.





### Radisson Hotel

Yaoundé / Cameroon

360 VR

Concept design and detailed cost analysis for hospitality areas with coordinated material planning.



### Messa Offices

Yaoundé / Cameroon

360 VR

Office layout design and comprehensive cost analysis to align functional needs with project budget.



### Mfoundi Residence

Yaoundé / Cameroon

Product supply and technical implementation support for residential interior systems and finishes.



### Çömlek Restaurant

Istanbul / Türkiye

360 VR

Restaurant concept design and structured cost analysis for functional, guest focused interior planning.



### Garden Lodge

Pereybere / Mauritius Island

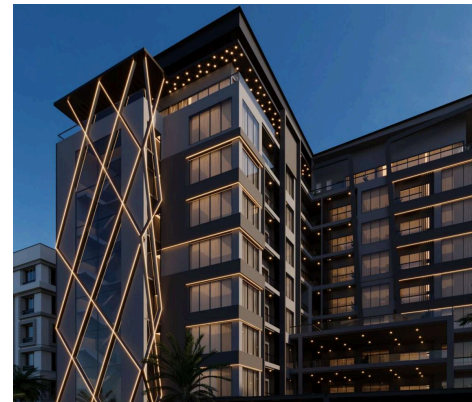
Product supply for lodge interiors, ensuring consistent quality and coordinated material delivery.



### Malawi - Mozambique OSBP

Chiponde / Malawi

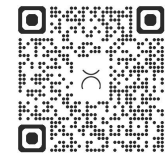
Product supply for cross-border facility interiors with durable, function-driven system components.



### Don Tower

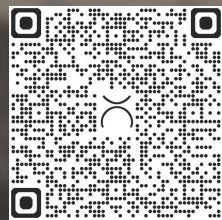
Abuja / Nigeria

Product supply for high-rise residential interiors with coordinated delivery and system consistency.



For more details  
check out our website

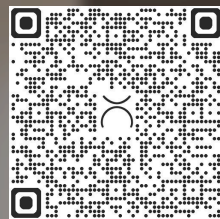




Scan to Experience  
the Project in 360° VR

Buns Hotel Exterior





Scan to Experience  
the Project in 360° VR

Radisson Hotel



COFIWO İnşaat ve Teknoloji A.Ş.  
info@cofiwo.com  
0850 450 1954

**Türkiye Head Office**

Soğanlık Yeni Mah. Baltacı Mehmet Paşa Sk.  
No: 4A/446 Zip: 34880 Kartal, İstanbul  
Türkiye  
+90 216 906 01 96

**USA Contact Office**

353 US-46, SUIT 150 Fairfield, 07004  
New Jersey / USA  
+1 551 234 19 96

**Cameroon Contact Person**

+237 697 94 95 20



**Netherlands Contact Person**

+31 687 312 596

**Switzerland Contact Person**

+41 78 260 34 53

We operate a continuous development programme and we reserve the right to amend specification without prior notification. Please contact the technical department for further information.

-  [wa.me/902169060196](https://wa.me/902169060196)
-  [www.instagram.com/cofiwoinc](https://www.instagram.com/cofiwoinc)
-  [www.facebook.com/cofiwoinc](https://www.facebook.com/cofiwoinc)
-  [www.linkedin.com/company/cofiwoinc](https://www.linkedin.com/company/cofiwoinc)
-  [www.youtube.com/@cofiwoinc](https://www.youtube.com/@cofiwoinc)

 [www.cofiwo.com](https://www.cofiwo.com)